



Essex County Scouts Annual Report and Accounts 2024-2025

Charity Number: 302097

Annual General Meeting
Tuesday 9th September 2025 at 8pm
Skreens Park Scout Activity Centre
Skreens Park Road, Chelmsford Essex CM1 4NL



Contents

Charity Details	3
Trustees Report	4
Report of the County Treasurer	15
Auditors Report	18
Statement of Accounts	22
Annual Census	44
Grants Analysis	45

The Essex County Scout Council is a Trust established under the rules of The Scout Association.
Trustees are appointed under the Policy, Organisation and Rules of The Scout Association.

President

The Lord Petre, KCVO, DL

Vice Presidents

J C Bailey
G Courtauld OBE, DL
B J Cousins
L A Jordan, DL

Bankers

Barclays Bank Plc
2 High Street
Chelmsford,
Essex CM1 1BG

CAF Bank Ltd
25 Kings Hill Avenue Kings Hill
West Malling, Kent ME19 4JQ

United Trust Bank Ltd
1 Ropemaker Street
London EC2Y 9AW

Caxton Payments Ltd
2 Leman Street
London, E1 8FA

Auditor

Edmund Carr LLP
146 New London Road
Chelmsford, Essex CM2 0AW

Insurance Broker

Clear Insurance Management Ltd
4, St Benets Road,
Southend-on-Sea,
Essex SS2 6LF

Contact Address

County Secretary
132 Cedar Road, Canvey Island
Essex SS8 9HS

secretary@essexscouts.org.uk

The County Trustee Board

Ex-officio Trustees

R A Bye, County Lead Volunteer
Miss J McDonald, County Youth Lead

Appointed Trustees

P J Stennett, County Chairman
Mrs L Sloan, County Treasurer (Until 10/09/24)
G Monk
Mrs S Griffiths
C Willis
M Edson
P Walker
J Freake
C Green (Appointed 10/09/24)
K Daykin-Woodberry (Until 10/09/24)
M Brace (Until 10/09/24)
T Humphries (Until 10/09/24)
J Long (Until 10/09/24)

Co-opted Trustees

Mrs M Hoblin, County Treasurer
(wef 19/9/24, to 01/05/2025)

Dan Skipton (wef 10/05/2025)

Tahir Sayani – County Treasurer, (Appointed 20/07/2025)

Charity Registration No: 302097

Scout Association No: 117

Online

- www.essexscouts.org.uk
- facebook.com/essexscouts
- twitter.com/essexscouts
- instagram.com/essexscouts

Scouting is a movement powered by the kindness and commitment of our volunteers, who make a difference and help to develop the young lives in our communities.

Our Vision

By 2028 Essex Scouts will have prepared more young people with skills for life, supported by amazing leaders delivering inspirational programmes.

We'll be growing, more inclusive, shaped by young people and making a bigger impact in our communities.

Our Mission

Scouts gives young people skills for life. Scouting actively engages and supports young people in their personal development, empowering them to make a positive contribution to society.

In partnership with adults, young people take part in fun indoor and outdoor activities. They learn by doing, by sharing in spiritual reflection and by taking responsibility. They make choices, undertake new and challenging activities, and they live their Scout Promise.

Our Values

We act with care, respect, integrity, co-operation, exploring our own and others beliefs.

Our Three Pillars of Work

To support the movement achieve its goals, our three pillars of work are a plan of action which supports our members and extends our reach, impacting the lives of more young people:

- **Programme** – is fun, enjoyable, high quality, delivered and supported by simple (digital) tools, to help young people gain skills for life.
- **People** – are well trained, with adult volunteers from all backgrounds better supported and more motivated, to support more young people from diverse backgrounds.
- **Perception** – to ensure that scouting is better understood, more visible, trusted and respected, with Scouts seen to be playing a key role in society.

Our Goal

Our aim is to build on the success of the previous plan: to continue to grow, become more inclusive, to be shaped by young people and to make a bigger impact in our communities.

The Essex Scout County comprises of 19 Districts, one of which is devoted purely to Sailing (Adventures Offshore). Within the remaining 18 Districts there are 246 Scout Groups with a total of c4,600 Adult volunteers delivering quality Scouting based programmes and in support roles. The Trustees acknowledge that a simple “thank you” to the Leaders and administrators across the County does not reflect the level of appreciation required for their support and generosity in giving their spare time to volunteer to the Sections, Groups, Districts and Units within the County.

The County Trustee Board team are empowered to provide governance and resources to support the Groups/District’s Adult volunteers and Administrators.

The Trustees confirm that they have paid due regard to the need in the Charities Act 2011 to demonstrate that our aims are for the public benefit. Our assessment is that we have met the public benefit criteria under both the Advancement of Education and the Advancement of Citizenship or Community Development

-
- headings.

The main principles of Scouting demonstrate that our aims are for the public benefit by:

- Supporting young people to develop their full potential, through the Scouting programme.
- Undertaking all Scouting activities with full consideration for the health and safety of all participants.
- Our members making the Scout Promise to be able to benefit from full scouting membership.
- The young people and other main beneficiaries of Scouting being in the 4 - 25 years age range.
- Being an inclusive organisation, with membership open to all, including those living in financial hardship. Whilst an annual membership fee is payable by all members, the ability to join is not restricted by their ability to pay. Arrangements are in place to assist those who are unable to pay their annual membership and other costs, both locally and through the County Support Fund.

Structure, Governance and Management

Essex County Scout Council is the electoral body which supports and encourages the development of Scouting in the County, and operates in accordance with a written Constitution. It is the body to which the County Trustee Board (the Trustees) is accountable. Details of the County Trustees are shown on page 3. Historically, Trustees have been appointed annually at the Annual General meeting of the County Scout Council, either by election or by nomination, and may also be co-opted by the County Trustee Board during the year. From 1 April 2024, changes were made as to how Trustees are appointed, term limits for Trustees, who can be a Trustee and how many Trustees there are, with these changes taking effect from the 2024 Annual General Meeting.

Trustees are made aware of their responsibilities, and are able to benefit from training provided by the County Learning Team or e-learning packages from The Scout Association website. The County Trustee Board promotes Trustees responsibilities to both District and Groups and compliance is monitored. We ensure that young people are involved in decision making, with two 18 – 25 year olds being members of the County Trustee Board and 18 - 25 year olds also represented on any County Trustee Board sub-committees. Young people are also given opportunities across the County to become Leaders of the Future, leading to better retention of young people through adult volunteering.

During the year the County Trustee Board met 6 times, by a mixture of face to face and Zoom meetings. The County Trustee Board is supported by a number of Sub-Committees/Teams, consisting of Finance (including the County Grants Board), Skreens Park Activity Centre, and Thriftwood County Headquarters & Training Centre. Substantial support is provided to the County Scout Council from a large number of volunteer helpers. There are c100 members of the County Team and other advisors directly supporting the County Scout Council. None of these volunteers receive any payments for services rendered. The principal sources of the Scout Council's income are membership subscriptions, fees paid by members for activities, together with grants and donations from public bodies, trusts and individuals.

Processes are in place to monitor compliance with mandatory Learning for all Adults throughout the County, with the County Trustee Board remaining focused and fully committed to Safety and Safeguarding. We have a Health & Safety (H&S) Professional in the Team who has compiled a comprehensive H&S document, as well as providing practical help and guidance to the Groups and Districts around the County.

Trustees' Responsibilities Statement

Our Trustees are valued, with them taking on several important roles. The Trustees are responsible for preparing the Annual Report and overseeing our Financial Statements in accordance with applicable law and Accounting Standards (United Kingdom Generally Accepted Accounting Practice).

Trustees are responsible for making sure our financial statements give a true and fair view of the status of the charity. They also monitor incoming resources and the application of the County's resources for the year. Law applicable to charities in England & Wales requires the Trustees to prepare financial statements for each financial year which give a true and fair view of the state of affairs of the charity and of the incoming

-
- resources and application of resources of the charity for that period.

In preparing these financial statements, the Trustees are required to:

- Select suitable accounting policies and then apply them consistently.
- Observe the methods and principles in the Charities SORP 2019 (FRS 102).
- Make judgements and estimates that are reasonable and prudent.
- State whether they've followed applicable accounting standards, subject to any material departures disclosed and explained in the financial statements.
- Prepare the financial statements on the 'going concern' basis, unless it is inappropriate to assume that the charity will continue in operation.

The Trustees are responsible for keeping accounting records that disclose with reasonable accuracy at any time the financial position of the Charity. They must also help our Trustees to ensure that the financial statements comply with the Charities Act 2011, the Charity (Annual Reports) Regulations 2008 and the provisions of the Trust Deed. They are also responsible for safeguarding the assets of the charity and hence taking reasonable steps for the prevention and detection of fraud and other irregularities.

The Trustees confirm that major risks have been reviewed and systems and procedures have been established to manage those risks (as set out in the Risk Assessment Policy on pages 16 and 17).

Review of the Year

During the year, progress has been made in implementing the various actions set out in the County Development Plan which was developed by Team Essex (consisting of the members of the County Trustee Board, together with the Essex Senior Leadership Team and District Lead Volunteers) in 2024, to identify what we need to do to move Scouting in Essex forward:

- *The Vision Statement set by Team Essex for Essex Scouts:*
“By 2028 Essex Scouts will have prepared more young people with skills for life, supported by amazing leaders delivering inspirational programmes.”
- *Providing support to Groups and Districts with Adult recruitment*
 - Recruitment Tool Kits – The four toolkits purchased by the County (each consisting of a Gazebo, free-standing roller banners, feather flags and leaflets) continue to be well used by local Districts and Groups around the County.
 - Growth and Development Project - With the previous funding coming to an end in 2024, the Trustees have agreed to continue funding a full-time paid Growth and Development Officer (GDO) beyond June 2024, using funds received from the Norman Garon Trust. The GDO continues to play a key role in the recruitment and support of local adult volunteers and Young Leaders (14-18), to help grow and develop new provision, and strengthen existing groups in identified communities/areas of need across Essex. With the funding going forward being provided solely by Essex Scouts, we are now able to broaden coverage of the GDO’s activities across the whole of the County.
- *Improving Communications and making it more targeted i.e. “Right message to the right people !”*
 - County Website – With the County Website moving to a new home last year, the opportunity has also been taken to move the Skreens Park Activity Centre website to a new home, making it more secure and easier to maintain.
 - Mailing Lists – The Compass clean-up undertaken ahead of the new adult membership system being launched, helped ensure that all Adults have a valid email address. As a result, mailings are now sent direct to our volunteer leaders, which has already shown an improvement in response rates with information being received direct by those it was intended for, in a timely manner. Work continues to improve how mailing lists are maintained and kept up to date, to ensure that maximum coverage is maintained.
 - Compass – As part of the Transformation project, a significant amount of work was undertaken to clean-up the contact information for every Adult Volunteer recorded on The Scout Association’s Adult Membership database. This helped to ensure that the data was fit and ready to migrate to the new digital system when it was launched at the end of 2024 and our thanks go to the Luke Bye and Hannah Welch of the Compliance Team for their hard work and dedication in this respect, with Essex leading the way, in terms of overall data quality and compliance.
 - County Lead Volunteer’s Update – the County Lead Volunteer continues to issue regular updates to the members of Team Essex, providing key information and updates, particularly where action is required, so as to focus attention where something needs doing.
- *Providing support for District Youth Leads*
 - The network of District Youth Leads continues to be developed by the County Youth Lead, with support being provided to District Lead Volunteers to help them make a Youth Lead appointment, if they do not already have one.
- *Providing ways to give Essex Scout volunteers the recognition they deserve*
 - Awards Data – The number of awards being presented across the County continues to increase, as a result of the ongoing analysis of the County’s data by the Awards Team, to identify areas where action is required and the information shared with District Lead Volunteers.
 - Awards Committees – District’s have been encouraged to establish their own Awards Committee to help identify candidates and submit nominations.

■ Major Events and International

The following **Major Events** took place during the year:

- **ESSEX WEEKEND** – held in May 2024. Over 420 attendees came to this unique event, which is aimed at thanking leaders and their families for the time they give to Essex scouts, and enables them to take part in the many activities offered over the weekend. The Saturday night quiz is always a highlight of this event and thanks go to Wendy Bye and her team for ensuring the event is a success.
- **County Marathon** - An incident hike, to incorporate top awards for c120 14+ young people and adults. To get young people out navigating and map reading, whilst carrying equipment in unfamiliar terrain. A 2 day walking event, based in Ashdown Forest, teams of 4-6, navigating between 24 manned bases, completing route cards from base to base, assisted by support and other teams. Thanks to the 14-24 and Event teams for putting on this event.
- **Beavers in Tents** - held in June 2024, had over 400 attendees for a weekend of fun and adventure for those young people between 6-8 years old at Skreens park Activity Centre, supported by over 100 adult volunteers. Thanks to the 4-13 and Event teams for organising this event
- **County Backpack** – 400 Young people took part in this 2 day walking event, based at Skreens Park, with teams of 4-6, navigating between 24 manned bases, completing route cards from base to base, supported by various teams. Teams are self sufficient, carrying a day sack with basic day hiking equipment. For some, this may be the first time they have undertaken an expedition. This is a great training opportunity in a controlled manner to develop skills for life. Thanks to the 4-13 and Event teams for organising this event.

In terms of **international trips** undertaken during 2024:

- Australia Jamboree
- On Boxing Day (26th December) 2024, 70 Scouts, Explorer Scouts and Leaders embarked on a three week Expedition to Australia for the Australian Jamboree 2025 in Maryborough, Queensland. They spent three days in Kuala Lumpur, travelling around the city, visiting Chinatown, the Petronas Tower and KL Tower plus a day at Genting World, a major theme park, as well as spending time in the Infinity Pool on the 21st floor of their hotel.
- The contingent arrived in Sydney on the morning of 31st December, travelling onwards to Cairns for New Year's Eve with the traditional fireworks.
- During four days in Cairns, they travelled to the Great Barrier Reef and went snorkeling, before travelling the rainforest, boarding the Skyway cable car system to travel to Kuranda, learning about the ecosystem from park rangers on the journey. After some time in Kuranda, the group travelled back to Cairns aboard the mine train stopping at Barron Falls to admire the scenery and take photographs. They undertook a third trip Hartley's Crocodile Adventures where many had pictures taken with a koala or snake and had the chance to feed the crocodiles (not with a Scout!).
- On leaving Cairns, they travelled by train on a 21 hour journey to Maryborough, the site of the Jamboree where they spent 10 days with our Australian friends experiencing all the best that a Jamboree can offer. Those under 16 joined with an Australian Troop while the older Explorer Scouts joined with their Venturer Colleagues assisting with the programme bases. Most people visited the Australia Zoo (made famous by Steve Irwin), a day into Maryborough and a water activities day, together with many adventurous activities onsite and big evening activities in the main arena and elsewhere. The contingent performed on International Evening, providing their own rendition of "Big Fish, Little Fish" aided by a video of Bob the Builder, which was well received.
- After leaving the Jamboree, the group travelled overnight by coach to Sydney where they spent three days visiting the Blue Mountains, with a whole day in Sydney sightseeing, finishing with a speedboat tour around the harbour.
- After three weeks and three days, they all returned home very tired but with memories that will last a lifetime.

Essex International Jamboree

The Essex International Scout and Guide Jamboree (EIJ) 2024 was a truly remarkable and memorable event and International Celebration of Scouting and Girlguiding, which took place from Saturday July 27th 2024, for a week of unparalleled fun, discovery and adventure.

The Jamboree embodied the vibrant spirit of both Girlguiding and Scouting, and aimed to provide every participant with a "week to remember" where they celebrated with friends, old and new, embraced new challenges, and enjoyed every opportunity.

It was considered the largest joint Scouting and Girlguiding event in Europe in 2024. The budget for the event was £2.5M and was under great pressure, but ultimately the event achieved a modest surplus due to careful budgeting and financial management.

EIJ is a large-scale international event, and it successfully welcomed over 4,500 Scouts and Guides from over 40 different countries from around the globe to camp together. With more than 8,000 people on the site, including participants, leaders, and staff, the sheer scale underscored the logistical and organisational commitment required. This truly international and multi-faith environment fostered cultural awareness and respect, reminding everyone to be tolerant and considerate.

Led by Karen Packer and Paul Walker, the EIJ team demonstrated an exceptional commitment to meticulous planning and safety, with organisers having dedicated three years of planning to ensure a fantastic experience.

The participant programme was designed to thrill, excite, challenge, and entertain. It was divided into:

- Daytime Zones:

Subcamps rotated through zones like Tech Lab (coding, robotics, VR), Enterprise (sweet making business challenge), Motion (bikes, KMX karts), Balancing Act (circus skills, high ropes, Parkour), Up and Under (climbing, caving), On Target (shooting, archery), It's a Knockout (team challenges), Survival (bush craft, fire lighting), and Wet & Wild (zorbing, kayaking).

- Evening Zones:

Offered free choice activities such as House of Music (DJs, live performances), Big Screen (two-screen cinema with age-appropriate films), Circus Extravaganza (live circus acts), the 14-17 Retreat (VIP lounge with mocktails for older participants), and a traditional Campfire.

- Anytime Zones:

Provided continuous engagement, including The Snug (quiet activities, badge swapping), Craft Barn (creative challenges), Daisy's Gaming Shed (computer games), Soft Rock Café (legendary milkshakes), The Beach (sandcastles, relaxation), All About Me, All About Us (inclusion, wellbeing, global issues), and the Sports Field & Café. The EIJ Presents talent show provided an opportunity for participants to showcase their talents on stage.



Ceremonies were a brilliant way to begin and end the Jamboree experience. Flag break was respected each

- morning and evening in the main arena. The Celebration Day held on Friday included a picnic and a celebratory party complete with fireworks.



The "EIJ in a Day" program offered opportunities for other Scouting and Girlguiding members to visit and participate in the event.

EIJ participants were encouraged to adhere to the "Five Golden Rules of Programme":

- look after themselves (stay hydrated, protected from weather)
- listen to instructions
- queue politely
- choose their adventures, and most importantly
- try new things

to maximise their experience and gain a sense of achievement.

While no single zone qualified for an individual badge, the activities throughout the week contributed significantly to participants' Scouting and Girlguiding awards.

The success of EIJ hinges on the dedicated efforts of its volunteer staff and leaders. The event acknowledged the crucial role of adult leaders and staff, offering an Adult/Staff Learning and Development Programme throughout the week. This programme provided opportunities for networking, sharing, and skill development, covering topics such as First Response first aid, diversity and inclusion, international opportunities, and programme planning.

This investment in volunteer development further underscored the comprehensive and forward-thinking approach the EIJ team give to organising such a large-scale international event. Something that was even more in focus after cancellation of the 2020 event due to the Covid Pandemic.

EIJ 2024 was not just "a week in a field"; it was a meticulously planned adventure designed to create lasting memories, foster new skills, and promote global understanding for everyone involved. Externally the event created significant positive press coverage and huge social media interest, further enhancing the positive aspects of Girlguiding and Scouting in Essex and beyond.

Feedback from the event has been highly positive with comments and improvements being rolled forward into future plans.

Looking ahead, Karen and Paul, the Jamboree Chiefs, have agreed to lead the 2028 event, for which planning has already started.

The County Trustees thank Paul, Karen and their wider team for putting on a first class event which is being looked at as an example of how such large-scale events should be run, with the team willing to share their knowledge and experience with others.



C.H.A.P.S. Team

The C.H.A.P.S. Team is a small group of volunteers who look after the maintenance of the County HQ and Training Centre at Thriftwood Campsite, Brentwood. Currently there are thirteen permanent members led by Bill Marshall.

Several small jobs, particularly urgent ones, were undertaken throughout the year, with the main work completed during April and December when the Team took over the whole complex for two weeks each time.

In total, the team undertook 1,173 hours of service and completed over 178 pieces of work, which is a fantastic achievement. A lot of the work is general maintenance such as repairing broken items, descaling the water boilers and dishwasher, painting and clearing up mess left by inconsiderate people, but some stand out. The biggest project this year was to dig out a trench along the concrete path at the back of the main hall and lay a French Drain (see picture). This has helped a great deal in easing the amount of slurry ending up on the pathway.

The Trustees would like to thank the C.H.A.P.S team for their dedication and work undertaken in supporting the County Complex.



Heritage Centre Team

The small Heritage Team of 8 members, led by Bill Marshall, is still slowly moving ahead in its reviewing and cataloguing of items held. New items are regularly being offered to the Team, with most accepted.

Agreement has been made with the National Headquarters Heritage Team that we will accept any items offered to them that they do not want that has an Essex provenance, which includes any item prior to 1967 that come from the old Essex Scout Districts now in Greater London North East Scout County.

Grants Board

The role of the County Grants Team is to distribute small grants to Individuals, Groups and Districts seeking

financial support. Grants are used for a variety of purposes, with the most common being for new section start-ups, support for building work (which includes major repairs and new builds), as well as replacement of kit used for adventurous activities. There is also a small amount of money to support Additional Needs.

The County also has a Support Fund to enable the County to provide financial assistance to those Districts/Groups/Units/ Individuals where support is required, as a result of the increasing cost of living pressures. The County Inclusivity Fund provides financial assistance to participants attending County level overseas events.

All grants have one key objective, which is to enhance the benefits that Scouting brings to young people in Essex.

Monies available to the Grants Team for distribution are held in The Norman Garon Trust (NGT), the County Building Fund (CBF), the Additional Needs Fund (ANF), the County Support Fund (CSF) and Inclusivity Fund (IF).

The CBF is funded from County Membership fees and the ANF from donations received. The CSF is funded entirely from County resources and IF is funded from surpluses arising from county led international trips, together with match-funding obtained from the Essex Community Foundation.

Over the past year there have been 4 start-up grants totaling £800 paid out, two for new Squirrel Scout Dreys, one for a Scout Troop and one for an Explorer Scout Unit.

Building and Equipment grants totaling £22k have been paid out for, a new Scout Headquarters, remedial building work, security and refurbishments to five Scout Headquarters, as well as helping one of the campsites, plus four grants been made to Groups for equipment purchases.

£200 has been granted from the Additional Needs Fund.

£2,220 has been paid out from the County Support Fund. The Trustees are keen to ensure that all members of Essex Scouts are aware of the existence of this fund and the availability of money to help scouting flourish within the County, with money not seen as a barrier to participation.

Altogether, the Grants Team has paid out of £35,825 worth of grants to Essex Scouts this year, with further commitments to pay nearly £13,780.

No grant requests have been received for the Inclusivity Fund.



Skreens Park Activity Centre

The site continues to return an operating surplus and remains very popular with Scouts, Guides, Duke of Edinburgh groups, schools and corporate customers.

The staff team, overseen by Pat Bailey (Operations Manager), has been maintained at 10, with them working tirelessly to fulfil bookings. The team consistently pull out all the stops to deliver a massive range of activities, especially during busy periods, as well as spending time working hard across the site to keep on top of essential maintenance, repairs and helping to improve the site.

The site has run Archery and NRSA instructor courses, First Aid training and Tomahawk courses during the year, with all being very well supported. These are an additional source of revenue to help fund further development without placing a strain on County financial resources.

- The site has seen a number of projects undertaken during the year by the Skreens Park Maintenance and Activity Team (SMART) whose support is greatly appreciated. The projects undertaken include:



- removal of trees from the car park to make more space (see picture - our thanks to Tree Fella for the loan of equipment and personnel to assist with this project), as well as clearing the site ready for construction of the new Workshop and Storage Barn.

- Work has commenced to relocate the campfire circle to an area within the Millenium Wood.

- Over 1,200 trees have been planted at Skreens over the last 4 years (though some are replacements of earlier failures).

- The pedal car track, located adjacent to the Ropes Courses has been completed (see picture).



- The sites CCTV system has been completely overhauled, with new equipment installed across the site. This project was funded by a grant of £10,500.00 from the Rural England Prosperity Fund.



- A Volunteer team from Hatfield Forest District have upgraded the Sensory Garden (see picture) and Chapel, with an annual maintenance budget agreed, going forward.

- The Skreens Park Website hosting has been updated, to make it more secure and easier to maintain.

An upgrade to 3-phase was required to the sites electricity supply, to support the new building projects, with this completed by UK Power Networks during the year. This

change will also support the installation of solar panels on the site, which is being undertaken simultaneously with the building projects.

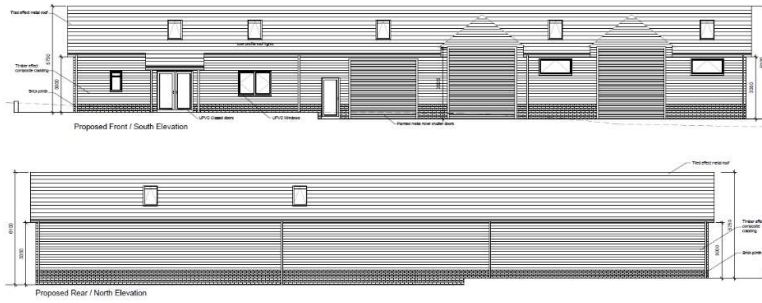
The Skreens Park Management Committee, working with the County Trustees and Staff, have continued to progress work on replacement of The Warren building (which is no longer fit for use) and the provision of a new purpose-built storage and maintenance building.

The Warren replacement is similar in design to The Leaman building (see proposed elevations). The Trustee Board approved a budget for the project, following completion of a comprehensive tender process, with construction work commencing in November 2024. Funding for the project has come from a very generous legacy received from the estate of the late Malcom Treacher MBE, a longstanding member of Essex Scouts. As a result, it is intended to name the new building 'Treacher'.



During the year, planning approval was also obtained for a new Storage and Maintenance Barn (see

- proposed elevations), which will be used to store the sites machinery and equipment. Upon completion, this will also enable improvements to be made to the wet weather/activity barn and for it to revert to its intended use, rather than it being used to store plant and machinery. The new facility will also contain a volunteer/meeting room, for use by those who support the site, as well as the staff for meetings. Construction of this building commenced in May 2025, with completion



due in early 2026. After the year end a contract of £620,133.34 was signed with LBM Construction Services Limited for the construction of the Barn.

We continue to develop the sites eco credentials, with wilding strips established again for the 2025 season, resulting in us continuing to see exciting wildlife on site, including Salamanders, toads, frogs and slow worms as well as there being a huge increase in the number and variety of flying insects now spotted around the site, such as butterflies' moths etc. In addition, further trees are to be planted as part of the proposed building work, with the Warren replacement building also having an Air-Source Heat Pump installed, together with Solar Panels to heat the water. We will also be harvesting the rainwater, which will be used to flush the toilets.

Skreens Park is managed by the Skreens Park Management Committee, chaired by Paul Walker, supported by Neil Bleakley and the volunteer Skreens Maintenance and Activity Team (SMART). The Trustees say a huge thank you to them all, together with our paid staff team, for their continued dedication and support in helping to make Skreens Park Activity Centre the success it is.

THANK YOU

During the year, we implemented the final changes required as part of the Scout Association's Transformation Programme, with the County continuing to provide support to Districts as they completed their Transformation journeys.

Across the County we continue to see a shortage of adult volunteers to work with our young people and are using the Growth and Development Officer to help Districts and Groups recruit new volunteers to grow and develop new provision, and strengthen existing Groups in identified communities/areas of need across Essex. There are people out there who, if asked, would be willing to help, so why not make use of one of the County volunteer recruitment tool kits and pop the question to anyone who shows interest ?

Essex continues to be one of the largest Scout Counties in the country, thanks to the hard work and dedication of our volunteers. We have seen excellent and innovative examples of what our volunteers do to continue providing Scouting to our young people at a time when they most needed it. You continue to be our greatest asset.

The Trustees thank all of the brilliant supportive volunteers who work tirelessly to ensure so many of the young people of all ages can continue to experience the amazing Scouting adventure both here in the UK and overseas.

WELL DONE AND THANK YOU ALL – KEEP UP THE GOOD WORK !

Paul J Stennett
County Chairman
August 2025

It gives me great pleasure to present the accounts of the Essex County Scout Council for 2024/25. During the year there was a surplus on normal activities on the General Fund of c£17k. The County's annual subscription for 2025/2026 was maintained at £3.50 for a second year, with it continuing to be heavily subsidised by the County's reserves, with a deficit budget of c£42k set for the year. The budget for the year reflects the new County Teams structure which was created as part of the Transformation process. The deficit budget reflects the Trustees desire to keep scouting within Essex an affordable option for all families. This commitment is reflected in the ongoing support given to both the County Support Fund and the Inclusivity Fund (see Note 18).

The census for January 2025 showed an decrease of 0.4% of young people over the previous year, decreasing from 14,699 to 14,634. The 2025 County Census is included with the main accounts for information.

The balance on the General Fund stands at c£176k, which is more than sufficient to cover one year's expenditure and any contingencies arising during a year. The County Trustee Board continues to monitor the reserves on an on-going basis, as outlined in the Reserves Policy below.

Skreens Park Activity Centre continues to grow and has made a surplus of c£5.5k, which is a great achievement in a tough economic environment and a reflection of the efforts made by Pat Bailey, Operations Manager, Paul Walker and Neil Bleakley, Chairman of the Skreens Park Management Committee together with the rest of the team, both the permanent staff and volunteers.

During the year the Thriftwood County HQ & Training Centre continued to be well supported, with it making a surplus of c£23k which is the result of the hard work and dedication of all of the team.

The other Designated Funds are used to make funding available for the benefit of Essex Scouting generally. During the year, grants paid totaled c£49.6k. Details of all these grants can be found on page 45.

The County Support Fund saw grants totaling £2,220 approved during the year, with consideration being given as to how to better advertise the existence of the fund across the County. The Inclusivity Fund continues to grow and will be used to support young people and leaders with their fundraising efforts to participate in future overseas trips.

The loan to 1st Corringham Scout Group remains within the debtors on the balance sheet. In 2022, the County Trustee Board agreed to lend £50,000 to 1st Corringham Scout Group to enable them to complete the rebuilding of their Group Headquarters. The loan is repayable over 10 years with interest set at 1% p.a. and a minimum repayment of at least £5,000 per year.

The County continued to take advantage of the higher interest rates seen during the year, with funds re-invested in a fixed rate bank account. Interest earned during the year totaled c£44k. The interest earned helps to pay for the County's audit fees and insurances, enabling the County to keep its annual subscription low.

Details of the accounts, notes and Auditor's Report are set out elsewhere in this document.

Post year-end, it was necessary for Megan Hoblin to step down as County Treasurer, for personal reasons and we would like to thank Megan for the support she provided during here tenure. We thank Dan Skipton for stepping in as interim County Treasurer, specifically to support us through this year's audit, whilst the search for a permanent replacement was underway. At 20th July 2025, we appointed Tahir Sayani to the role as County Treasurer.

On behalf of the County Trustee Board, we would like to thank everyone who has supported the County in the past year. In particular, we would like to thank everyone involved in Essex Scouting for the dedication that they give and the Trustee Board for supporting the County Finance Team. Special thanks must go to Wendy Bye, County Financial Administrator and Karen Batman, Assistant County Treasurer, for all their help, dedication

and patience; without their support the County Treasurer's job would not have been possible.

Reserves Policy

Reserves represent that part of the Charity's Unrestricted Funds that are freely available to spend and enable the County Trustee Board to fulfil its overall responsibilities. Whilst these responsibilities are mainly 'what ifs', the reserves should be sufficient to cover most eventualities and enable the County to operate on an ongoing basis and cover any contingencies should they arise.

During the year the Trustees reviewed this policy and agreed to maintain the level of General Reserves at an absolute minimum figure of £100k being deemed sufficient to enable the County to operate on an ongoing basis.

In addition, the Trustees reviewed what would be required to continue supporting Skreens Park and enable an orderly wind-down of the operations, in the event it is decided to cease trading. In this situation, the Trustees are of the view that we would probably look to honour bookings for a period of, say, three months, to prevent the need for the County to have to refund forward bookings for which money has already been received. To enable this to happen, we would require sufficient funds to be able to pay staff and utility bills etc. for the period, with an amount of £100,000 required to achieve this. Funds held in the Designated Reserve for Skreens Park will also be taken into account when calculating this figure, with a minimum amount of £50k to be set aside in our General Reserves.

The level of Reserves may be varied by the County Trustee Board if it identifies a longer-term project in which it might wish to invest, that seeks to further the objectives of Essex Scouting.

The Capital Development Fund will be used, principally, to finance new developments at Skreens Park Activity Centre, with redevelopment of the Warren building started during the year. Other projects across the County can be considered for funding, when identified. Other earmarked reserves are maintained at a level to enable the specific objectives to be carried out.

Reserves will always be held as liquid assets in accounts regulated by appropriate banking institutions and governed as part of the investment policy.

The Trustees monitor the level of reserves on a regular basis.

Risk Assessment Policy

The Trustees and County Lead Volunteer are committed to conducting its undertaking in a manner that protects the health and safety of its employees, members, contractors and the public. In addition to complying strictly with the health and safety measures required by legislation, it is the Council's policy to promote and take all reasonably practicable steps to safeguard the health, safety and welfare of its employees, members and others who may be affected by its actions.

To meet the requirements of this policy the Trustees and County Lead Volunteer will work with all employees, volunteer leaders and other relevant parties to strive for continuous improvement in Health and Safety Executive performance. They will operate an integrated, structured and documented system of management control over all its operations. This system of control commits the County Trustee Board to:

- Undertaking appropriate reviews and assessments of its operations and undertakings to measure progress, manage risk, and ensure compliance with this policy and that of the Scout Association.
- Setting up and maintaining safe and healthy systems of work to protect all county employees, members and others, including the public.
- Making all reasonable endeavours to ensuring that its county employees and volunteer leaders are fully competent to perform the tasks allocated to them by careful recruitment, ongoing training and development, and by provision of the necessary resources.
- Maintaining the health and safety awareness of all county employees and volunteer leaders by the

-
- establishment of sound health and safety practices and operations through competent management and good communications, leading to continuous improvement in health and safety performance.
 - Ensuring that the contractors we directly engage are competent to perform the work contracted and encouraging good safety practice within such companies in compliance with this policy.
 - Effective response to investigation of accidents and incidents and, to establish where appropriate root causes and take reasonable actions to prevent their reoccurrence.

To achieve this, the County Trustee Board will work within the policies and procedures as laid down by the Scout Association and encourage and support all Districts in so doing. The County Lead Volunteer will provide information to, and ensure appropriate consultation with, county employees and volunteer leaders on matters relevant to this policy.

Prime responsibility for these matters lies with the Trustees and the County Lead Volunteer and his Team; all other employees and volunteer leaders equally have responsibility for matters within their control. They have a duty to ensure that health and safety issues are always given the fullest consideration, and for providing a safe and healthy working environment for their employees and members.

In addition, all employees and volunteer leaders have a responsibility to themselves and others for the safety and prevention of ill health at work. We must all work together in the spirit of participation and co-operation to ensure the success of this Policy.

County Treasurer
August 2025

Essex County Scout Council

Independent Auditor's Report to the Members of Essex County Scout Council

Opinion

We have audited the financial statements of Essex County Scout Council (the 'charity') for the year ended 31 March 2025, which comprise the Statement of Financial Activities, Balance Sheet, Cash Flow Statement, and Notes to the Financial Statements, including significant accounting policies. The financial reporting framework that has been applied in their preparation is applicable law and United Kingdom Accounting Standards, including Financial Reporting Standard 102 The Financial Reporting Standard applicable in the UK and Republic of Ireland (United Kingdom Accepted Accounting Practice).

In our opinion the financial statements:

- give a true and fair view of the state of the charity's affairs as at 31 March 2025 and of its incoming resources and application of resources, including its income and expenditure, for the year then ended;
- have been properly prepared in accordance with United Kingdom Generally Accepted Accounting Practice; and
- have been prepared in accordance with the requirements of the Charities Act 2011.

Basis for opinion

We conducted our audit in accordance with International Standards on Auditing (UK) (ISAs (UK)) and applicable law. Our responsibilities under those standards are further described in the auditor responsibilities for the audit of the financial statements section of our report. We are independent of the charity in accordance with the ethical requirements that are relevant to our audit of the financial statements in the UK, including the FRC's Ethical Standard, and we have fulfilled our other ethical responsibilities in accordance with these requirements. We believe that the audit evidence we have obtained is sufficient and appropriate to provide a basis for our opinion.

Conclusions relating to going concern

In auditing the financial statements, we have concluded that the trustees use of the going concern basis of accounting in the preparation of the financial statements is appropriate.

Based on the work we have performed, we have not identified any material uncertainties relating to events or conditions that, individually or collectively, may cast significant doubt on the charity's ability to continue as a going concern for a period of at least twelve months from when the original financial statements were authorised for issue.

Our responsibilities and the responsibilities of the trustees with respect to going concern are described in the relevant sections of this report.

Other information

The trustees are responsible for the other information. The other information comprises the information included in the annual report, other than the financial statements and our auditor's report thereon. Our opinion on the financial statements does not cover the other information and, except to the extent otherwise explicitly stated in our report, we do not express any form of assurance conclusion thereon.

In connection with our audit of the financial statements, our responsibility is to read the other information and, in doing so, consider whether the other information is materially inconsistent with the financial statements or our knowledge obtained in the audit or otherwise appears to be materially misstated. If we identify such material inconsistencies or apparent material misstatements, we are required to determine whether there is a material misstatement in the financial statements or a material misstatement of the other information. If, based on the work we have performed, we conclude that there is a material misstatement of this other information, we are required to report that fact.

We have nothing to report in this regard.

Essex County Scout Council

Independent Auditor's Report to the Members of Essex County Scout Council (continued)

Matters on which we are required to report by exception

In the light of our knowledge and understanding of the charity and its environment obtained in the course of the audit, we have not identified material misstatements in the Trustees' Report.

We have nothing to report in respect of the following matters where the Charities (Accounts and Report) Regulations 2008 requires us to report to you if, in our opinion:

- the information given in the trustees' report is inconsistent in any material respect with the financial statements; or
- sufficient accounting records have not been kept; or
- the financial statements are not in agreement with the accounting records; or
- we have not received all the information and explanations we require for our audit.

Responsibilities of trustees

As explained more fully in the Statement of Trustees' Responsibilities (set out on page 5 and 6), the trustees are responsible for the preparation of the financial statements and for being satisfied that they give a true and fair view, and for such internal control as the trustees determine is necessary to enable the preparation of financial statements that are free from material misstatement, whether due to fraud or error.

In preparing the financial statements, the trustees are responsible for assessing the charity's ability to continue as a going concern, disclosing, as applicable, matters related to going concern and using the going concern basis of accounting unless the trustees either intend to liquidate the charity or to cease operations, or have no realistic alternative but to do so.

Auditor Responsibilities for the audit of the financial statements

Our objectives are to obtain reasonable assurance about whether the financial statements as a whole are free from material misstatement, whether due to fraud or error, and to issue an auditor's report that includes our opinion. Reasonable assurance is a high level of assurance, but is not a guarantee that an audit conducted in accordance with ISAs (UK) will always detect a material misstatement when it exists. Misstatements can arise from fraud or error and are considered material if, individually or in the aggregate, they could reasonably be expected to influence the economic decisions of users taken on the basis of these financial statements.

The extent to which our procedures are capable of detecting irregularities, including fraud is detailed below:

Essex County Scout Council

Independent Auditor's Report to the Members of Essex County Scout Council (continued)

Our approach to identifying and assessing the risks of material misstatement in respect of irregularities, including fraud and non-compliance with laws and regulations, was as follows;

- The engagement partner ensured that the engagement team collectively had the appropriate competence, capabilities and skills to identify or recognise non-compliance with applicable laws and regulations.
- We identified the laws and regulations applicable to the charity through discussions with Trustees and other management, and from our knowledge and experience of the charity sector.
- We focused on specific laws and regulations which we considered may have a direct material effect on the financial statements or the operations for the charity.
- We assessed the extent of compliance with the laws and regulations identified above through making enquiries of management.

We assessed the susceptibility of the charity's financial statements to material misstatement, including obtaining an understanding of how fraud might occur by;

- Making enquiries of management as to where they considered there was susceptibility to fraud, their knowledge of actual, suspected and alleged fraud.
- Considering the internal controls in place to mitigate the risks of fraud and non-compliance with laws and regulations.

To address the risk of fraud through management bias and override of controls, we;

- Performed analytical procedures to identify any unusual or unexpected relationships
- Tested journal entries to identify unusual transactions
- Investigated the rationale behind significant or unusual transactions

Because of the inherent limitations of an audit, there is a risk that we will not detect all irregularities, including those leading to a material misstatement in the financial statements or non-compliance with regulation. This risk increases the more that compliance with a law or regulation is removed from the events and transactions reflected in the financial statements, as we will be less likely to become aware of instances of non-compliance. The risk is also greater regarding irregularities occurring due to fraud rather than error, as fraud involves intentional concealment, forgery, collusion, omission or misrepresentation

As part of an audit in accordance with ISAs (UK), we exercise professional judgement and maintain professional scepticism throughout the audit. We also:

- Identify and assess the risks of material misstatement of the financial statements, whether due to fraud or error, design and perform audit procedures responsive to those risks, and obtain audit evidence that is sufficient and appropriate to provide a basis for our opinion. The risk of not detecting a material misstatement resulting from fraud is higher than for one resulting from error, as fraud may involve collusion, forgery, intentional omissions, misrepresentations, or the override of internal control.
- Obtain an understanding of internal control relevant to the audit in order to design audit procedures that are appropriate in the circumstances, but not for the purpose of expressing an opinion on the effectiveness of the charity's internal control.
- Evaluate the appropriateness of accounting policies used and the reasonableness of accounting estimates and related disclosures made by the trustees.
- Conclude on the appropriateness of the trustees use of the going concern basis of accounting and, based on the audit evidence obtained, whether a material uncertainty exists related to events or conditions that may cast significant doubt on the charity's ability to continue as a going concern. If we conclude that a material uncertainty exists, we are required to draw attention in our auditor's report to the related disclosures in the financial statements or, if such disclosures are inadequate, to modify our opinion. Our conclusions are based on the audit evidence obtained up to the date of our auditor's report. However, future events or conditions may cause the charity to cease to continue as a going concern.

Essex County Scout Council

Independent Auditor's Report to the Members of Essex County Scout Council (continued)

- Evaluate the overall presentation, structure and content of the financial statements, including the disclosures, and whether the financial statements represent the underlying transactions and events in a manner that achieves fair presentation.

We communicate with those charged with governance regarding, among other matters, the planned scope and timing of the audit and significant audit findings, including any significant deficiencies in internal control that we identify during our audit.

Use of our report

This report is made solely to the charity trustees, as a body, in accordance with with Part 4 of the Charities (Accounts and Reports) Regulations 2008. Our audit work has been undertaken so that we might state to the trustees those matters we are required to state to trustees in an auditors' report and for no other purpose. To the fullest extent permitted by law, we do not accept or assume responsibility to anyone other than the charity and its trustees as a body, for our audit work, for this report, or for the opinions we have formed.

.....
Edmund Carr LLP

146 New London Road
Chelmsford
Essex
CM2 0AW

Date:.....

Edmund Carr LLP is eligible for appointment as auditor of the charity by virtue of its eligibility for appointment as auditor of a company under section 1212 of the Companies Act 2006.

Essex County Scout Council

Statement of Financial Activities for the Year Ended 31 March 2025

	Note	Unrestricted funds £	Restricted funds £	Total 2025 £	Total 2024 £
Income and Endowments from:					
Donations and legacies	2	951,803	10,500	962,303	301,451
Charitable activities	3	2,092,105	-	2,092,105	1,343,219
Other trading activities	4	36,938	-	36,938	32,314
Investment income	5	43,957	-	43,957	27,957
Other income	6	2,185	-	2,185	-
Total income		<u>3,126,988</u>	<u>10,500</u>	<u>3,137,488</u>	<u>1,704,941</u>
Expenditure on:					
Charitable activities	7	<u>(2,487,549)</u>	<u>(2,220)</u>	<u>(2,489,769)</u>	<u>(1,511,883)</u>
Total expenditure		<u>(2,487,549)</u>	<u>(2,220)</u>	<u>(2,489,769)</u>	<u>(1,511,883)</u>
Net income		639,439	8,280	647,719	193,058
Gross transfers between funds		<u>10,500</u>	<u>(10,500)</u>	<u>-</u>	<u>-</u>
Net movement in funds		649,939	(2,220)	647,719	193,058
Reconciliation of funds					
Total funds brought forward		<u>3,049,558</u>	<u>48,162</u>	<u>3,097,720</u>	<u>2,580,200</u>
Total funds carried forward	18	<u><u>3,699,497</u></u>	<u><u>45,942</u></u>	<u><u>3,745,439</u></u>	<u><u>2,773,258</u></u>

All of the charity's activities derive from continuing operations during the above two periods.

The funds breakdown for 2024 is shown in note 18.

Essex County Scout Council

Balance Sheet as at 31 March 2025

	Note	2025 £	2024 £
Fixed assets			
Tangible assets	12	1,898,825	1,574,363
Current assets			
Stocks	13	14,286	11,822
Accrued Income	14	809,329	14,636
Prepayments	14	15,219	283,269
Loan receivable	14	35,000	40,000
Youth programme debtor	14	29,222	-
Pension Contributions	14	18	18
Cash at bank and in hand	15	1,273,945	2,683,046
		<u>2,177,019</u>	<u>3,032,791</u>
Sundry creditors	16	(13,779)	(40,516)
Provisions	16	(10,848)	(10,848)
Accruals	16	(88,120)	(56,475)
Deferred income	16	(217,658)	(1,726,057)
Creditors: Amounts falling due within one year	16	<u>(330,405)</u>	<u>(1,833,896)</u>
Net current assets		<u>1,846,614</u>	<u>1,198,895</u>
Net assets		<u>3,745,439</u>	<u>2,773,258</u>
Funds of the charity:			
Financed by			
General funds		175,547	158,736
Designated funds		1,625,125	991,997
Restricted Funds		<u>45,942</u>	<u>48,162</u>
Total usable reserves		1,846,614	1,198,895
Capital financing reserve		<u>1,898,825</u>	<u>1,574,363</u>
Total funds	18	<u>3,745,439</u>	<u>2,773,258</u>

The financial statements on pages 22 to 39 were approved by the trustees, and authorised for issue on 3 September 2025 and signed on their behalf by:

Essex County Scout Council

Balance Sheet as at 31 March 2025 (continued)

.....
P J Stennett
Trustee

.....
R A Bye
Trustee

Essex County Scout Council

Cash Flow Statement for the Year Ended 31 March 2025

	Note	2025 £	2024 £
Cash flows from operating activities			
Net movement in funds for the reporting year		647,719	193,058
Adjustments to cash flows from non-cash items			
Investment income	5	<u>(43,957)</u>	<u>(27,957)</u>
		603,762	165,101
Working capital adjustments			
Increase in stocks	13	(2,464)	(1,834)
(Increase)/decrease in debtors	14	(550,865)	141,395
Increase in creditors	16	4,908	40,522
(Decrease)/increase in deferred income		<u>(1,508,399)</u>	<u>951,997</u>
Net cash flows from operating activities		(1,453,058)	1,297,181
Cash flows from investing activities			
Interest receivable and similar income	5	<u>43,957</u>	<u>27,957</u>
Net (decrease)/increase in cash and cash equivalents		(1,409,101)	1,325,138
Cash and cash equivalents at 1 April		<u>2,683,046</u>	<u>1,357,908</u>
Cash and cash equivalents at 31 March		<u><u>1,273,945</u></u>	<u><u>2,683,046</u></u>

All of the cash flows are derived from continuing operations during the above two periods.

The notes on pages 26 to 39 form an integral part of these financial statements.

Essex County Scout Council

Notes to the Financial Statements for the Year Ended 31 March 2025

1 Accounting policies

(i) Statement of compliance

These accounts are prepared under the historic cost convention and, other than disclosed below, in accordance with the Financial Reporting Standard applicable in the United Kingdom and Republic of Ireland (FRS102) and the Statement of Recommended Practice 'Accounting and Reporting by Charities' applicable to charities preparing their accounts in accordance with the FRS102 issued on 1st January 2019.

(ii) Basis of preparation

The accounts relate to the activities of the Essex County Scout Council and do not include the accounts of any of its individual Scout Groups or Districts within the County, each of which are set up as stand alone charities. The Charity constitutes a public benefit entity as defined by FRS102.

(iii) Going concern

The trustees consider that there are no material uncertainties about the charity's ability to continue as a going concern.

(iv) Income and endowments

All incoming resources including government grants, are included in the SOFA (Statement of Financial Activities) when the charity is legally entitled to the income, receipt is considered probable, and the amount can be reliably measured. Annual subscriptions received in respect of the following year and income for events in a future period is treated as deferred income (receipts in advance).

(v) Donations and legacies

Donations and legacies are recognised on a receivable basis when receipt is probable and the amount can be reliably measured.

(vi) Deferred income

Deferred income represents amounts received for events in future periods and is released to incoming resources in the period for which it has been received.

(vii) Expenditure

All expenditure is recognised once there is a legal or constructive obligation to that expenditure, it is probable settlement is required and the amount can be measured reliably. All costs are allocated to the applicable expenditure heading that aggregate similar costs to that category.

(viii) Charitable activities

Charitable expenditure comprises those costs incurred by the charity in the delivery of its activities and services for its beneficiaries. It includes both costs that can be allocated directly to such activities and those costs of an indirect nature necessary to support them.

(ix) Support costs

Support costs include central functions and have been allocated to activity cost categories on a basis consistent with the use of resources, for example, allocating property costs by floor areas, or per capita, staff costs by the time spent and other costs by their usage.

Essex County Scout Council

Notes to the Financial Statements for the Year Ended 31 March 2025 (continued)

(x) Governance costs

These include the costs attributable to the charity's compliance with constitutional and statutory requirements, including audit, strategic management and trustees meetings and reimbursed expenses.

(xi) Taxation

Essex County Scout Council is a registered charity and is not subject to corporation tax on its charitable activities.

(xii) Tangible fixed assets

Tangible assets are divided into two categories:

- Freehold and leasehold land and buildings
- Equipment

The costs of equipment are written off and expensed in the year of acquisition and not held as assets in the balance sheet. All other fixed asset additions, whilst treated as an expense in the year of acquisition, are carried in the balance sheet at historic cost and the benefit recorded in the Capital Financing Reserve. On this basis no depreciation is provided.

The Trustees consider this conservative treatment to be appropriate for the charity as it is in line with the treatment of assets in the public sector. The Trustees have conducted an impairment review and consider that the current value of the buildings is in excess of cost.

(xiii) Stock

Stocks held at Skreens Park are valued at cost.

(xiv) Trade debtors

Trade debtors are amounts due from customers for merchandise sold or services performed in the ordinary course of business.

Trade debtors are recognised initially at the transaction price. They are subsequently measured at amortised cost using the effective interest method, less provision for impairment. A provision for the impairment of trade debtors is established when there is objective evidence that the charity will not be able to collect all amounts due according to the original terms of the receivables.

(xv) Cash and cash equivalents

Cash comprises cash held in bank current and deposit accounts.

(xvi) Trade creditors

Creditors are recognised at the settlement amount due.

(xvii) Fund structure

The General County Fund is an unrestricted fund, which is available for use at the discretion of the Trustees in the furtherance of the general objectives of the charity.

Details of the nature and purpose of the Designated Funds are set out in note 18.

Essex County Scout Council

Notes to the Financial Statements for the Year Ended 31 March 2025 (continued)

Restricted Funds are subject to restrictions on their expenditure imposed by the donor. Details of the nature and purpose of the Restricted Funds are set out in note 18.

2 Income from donations and legacies

	Unrestricted funds		Restricted funds	Total funds
	Designated	General		
	£	£	£	£
Donations and legacies;				
Legacies	800,000	-	-	800,000
Donations	135	1,518	10,500	12,153
Norman Garon Trust	84,139	65,861	-	150,000
Special Needs	150	-	-	150
Total for 2025	884,424	67,379	10,500	962,303
Total for 2024	243,609	57,842	-	301,451

The County Trustees have been advised that the County is the main beneficiary of the estate of the late Malcolm Treacher MBE, with an amount of £800,000 to be received in the next financial year, which has been shown as accrued income in the accounts (see note 14).

We gratefully acknowledge receipt of the above donations and thank the donors for their support of Essex Scouting.

3 Income from charitable activities

	Unrestricted funds		Total 2025	Total 2024
	Designated	General		
	£	£	£	£
HQ Subscriptions	5,829	591,793	597,622	552,591
Less HQ Subscriptions paid	-	(546,525)	(546,525)	(509,532)
County subscriptions	5,829	45,268	51,097	43,059
Major Events and International	-	371,353	371,353	832,678
County activities	456,181	51,782	507,963	462,760
Essex International Jamboree	1,161,272	-	1,161,272	-
Other income	-	420	420	4,722
	1,617,453	423,555	2,041,008	1,300,160
Total Charitable Activities	1,623,282	468,823	2,092,105	1,343,219

Essex County Scout Council

Notes to the Financial Statements for the Year Ended 31 March 2025 (continued)

4 Income from other trading activities

	Unrestricted funds Designated £	Restricted funds £	Total funds £
Trading income; Shop sales	36,938	-	36,938
Total for 2025	<u>36,938</u>	<u>-</u>	<u>36,938</u>
Total for 2024	<u>32,314</u>	<u>-</u>	<u>32,314</u>

Essex County Scout Council

Notes to the Financial Statements for the Year Ended 31 March 2025 (continued)

5 Investment income

	Unrestricted funds Designated £	General £	Restricted funds £	Total funds £
Interest receivable and similar income;				
Other Interest receivable on bank deposits	8,477	35,480	-	43,957
Total for 2025	<u>8,477</u>	<u>35,480</u>	<u>-</u>	<u>43,957</u>
Total for 2024	<u>2,373</u>	<u>25,584</u>	<u>-</u>	<u>27,957</u>

6 Other income

	Unrestricted funds General £	Total 2025 £
Screens- Insurance claim	2,185	2,185

The insurance claim relates to theft of a box trailer whilst it was parked at Screens Park Activity Centre.

7 Expenditure on charitable activities

	Unrestricted funds Designated £	General £	Restricted funds £	Total funds £
County activities	598,282	26,825	2,220	627,327
Essex International Jamboree	1,130,613	-	-	1,130,613
Major Events and International	-	460,198	-	460,198
Staff costs	215,538	-	-	215,538
Support Costs	-	12,616	-	12,616
Governance costs	-	43,477	-	43,477
Total for 2025	<u>1,944,433</u>	<u>543,116</u>	<u>2,220</u>	<u>2,489,769</u>
Total for 2024	<u>523,946</u>	<u>986,299</u>	<u>1,638</u>	<u>1,511,883</u>

Essex County Scout Council

Notes to the Financial Statements for the Year Ended 31 March 2025 (continued)

		Unrestricted funds		Restricted funds	Total 2024
	Note	Designated £	General £	£	£
County activities		307,876	12,563	1,638	322,077
Property Maintenance		16,967	-	-	16,967
Major Events and International		-	901,977	-	901,977
Staff costs		196,455	-	-	196,455
Support costs		2	25,778	-	25,780
Governance costs		2,646	45,981	-	48,627
		<u>523,946</u>	<u>986,299</u>	<u>1,638</u>	<u>1,511,883</u>

8 Analysis of governance and support costs

Governance costs

	Unrestricted funds		Total funds
	Designated £	General £	£
Audit fees			
Audit of the financial statements	-	15,056	15,056
Other governance costs	-	28,421	28,421
Total for 2025	<u>-</u>	<u>43,477</u>	<u>43,477</u>
Total for 2024	<u>2,646</u>	<u>45,981</u>	<u>48,627</u>

The governance costs have been allocated based on gross expenditure of the activities. The total fees payable to the auditor amount to £15,000 in respect of audit services (2023/24- £7,500). £1,000 of these fees were recharged to the Essex International Jamboree, with the balance relating to the cost of auditing the County accounts only.

9 Trustees remuneration and expenses

Five of the Essex County Scout Council Trustees were reimbursed travel expenses totalling £1,710 (two trustees received £1,296 in 2023/2024).

Essex County Scout Council

Notes to the Financial Statements for the Year Ended 31 March 2025 (continued)

10 Staff costs

The aggregate payroll costs were as follows:

	2025 £	2024 £
Staff costs during the year were:		
Wages and salaries	193,084	184,313
Social security costs	8,194	8,947
Pension costs	14,260	3,195
	<u>215,538</u>	<u>196,455</u>

The monthly average number of persons (including senior management / leadership team) employed by the charity during the year expressed as full time equivalents was as follows:

	2025 No	2024 No
Average	<u>10</u>	<u>10</u>

No employee received emoluments of more than £60,000 during the year

11 Taxation

The charity is a registered charity and is therefore exempt from taxation.

12 Tangible fixed assets

St Lukes Camp Site, Skreens Park, Roxwell is a freehold property (52 acres and 3 acre lake) acquired in 1971. The historic value of the site and buildings is £1,879,655. Thriftwood County headquarters and Training Complex is a leasehold property (peppercorn rent) of 6 acres built in 1966 at a cost of £19,170 (99- year lease). The buildings at the two sites are currently insured for £4,176,205. The current value of equipment, vehicles and stocks for insurance purposes is £635,542. An analysis of the fixed assets, shown at cost, is set out below.

A survey of the properties was carried out by David Dedman FRICS on 15th November 2021 and confirmed that the insured values of the properties is in line with current re-build costs.

Skreens Park Activity Centre	2025	2024
Skreens Park - Site	11,615	11,615
Skreens Park - Leaman House	286,081	286,081
Skreens Park -Tinley House	249,353	249,353
Skreens Park - Camp Shop	27,085	27,085
Skreens Park - New Toilet & Shower Block	306,065	306,065
Skreens Park - Wet Weather Block	16,896	16,896
Skreens Park - Climbing Wall	46,765	46,765

Essex County Scout Council

Notes to the Financial Statements for the Year Ended 31 March 2025 (continued)

Skreens Park Activity Centre	2025	2024
Skreens Park - Crew Quarters	184,186	184,186
Skreens Park - Bungalow	5,236	5,236
Skreens Park - High Ropes Course	301,911	301,911
Skreens Park - Land for access road	120,000	120,000
Skreens Park- Warren Project	304,568	-
Skreens Park- Storage Barn	19,894	-
	1,879,655	1,555,193
Thriftwood		
Thriftwood - Training Centre	19,170	19,170
	19,170	19,170
Total	1,898,825	1,574,363

13 Stock

	2025	2024
	£	£
Stocks- Skreens Park Shop	14,286	11,822

14 Debtors

	2025	2024
	£	£
Youth programme debtor	29,222	-
Prepayments	15,219	283,269
Accrued income	809,329	14,636
Pension debtor	18	18
Loans receivable	35,000	40,000
	888,788	337,923

Essex County Scout Council

Notes to the Financial Statements for the Year Ended 31 March 2025 (continued)

The Loans Receivable figure on the balance sheet is the current outstanding balance of £35,000 of a loan made to 1st Corringham Scout Group in 2022 to enable them to complete the re-build of their Headquarters. The loan, originally of £50,000 is repayable within 10 years with interest set at 1% p.a. There is a minimum repayment of £5,000 per year.

The County Trustees have been advised that the County is the main beneficiary of the estate of the late Malcolm Treacher MBE, with an amount of £800,000 to be received in the next financial year, which has been shown as accrued income in the accounts.

15 Cash and cash equivalents

	2025 £	2024 £
Operational accounts		
Barclays- Current Account	32,944	27,447
Barclays- Deposit Account	18,774	17,435
CAFCash- Current Account	78,732	33,414
CAFCash- Gold Deposit Account	445,368	496,654
CAFCash- Skreens Current Account	16,912	54,641
CAFCash- Skreens Gold Deposit Account	148,373	109,871
United Trust- Charity 3 Month Bond	428,910	406,382
	<u>1,170,013</u>	<u>1,145,844</u>
Essex International Jamboree		
CAFCash- EIJ Current Account	6,437	73,452
CAFCash EIJ Gold Deposit Account	61,626	1,424,555
	68,063	1,498,007
Barclays - No 2 - Internationals Account	35,869	39,195
	<u>-</u>	<u>-</u>
Total cash	<u>1,273,945</u>	<u>2,683,046</u>

Essex County Scout Council

Notes to the Financial Statements for the Year Ended 31 March 2025 (continued)

16 Creditors: amounts falling due within one year

	2025	2024
	£	£
Sundry creditors	13,779	40,516
Provisions	10,848	10,848
Accruals	88,120	56,475
Deferred income	217,658	1,726,057
	<u>330,405</u>	<u>1,833,896</u>

Deferred income	2025	2024
	£	£
Skreens deposits	51,793	50,451
HQ Subscriptions	55,524	-
Youth Programme	78,823	26,173
Girlguiding Essex	31,518	82,696
Essex International Jamboree	-	1,566,737
	<u>217,658</u>	<u>1,726,057</u>

The Skreens deposits amount relates to monies received in advance for future bookings at Skreens Park Activity Centre.

The HQ subscriptions deferred income relates to subscriptions received in the 2024/25 year that relate to 2025/26.

The Youth Programme amount relates to monies received in advance for future International Expeditions.

Girlguiding Essex is an accumulation of profits and losses from the Essex International Jamboree (EIJ), the balance is treated as income in advance used to finance the next EIJ.

The Essex International Jamboree took place in August 2024 and therefore there was no income in advance for 2025.

Essex County Scout Council

Notes to the Financial Statements for the Year Ended 31 March 2025 (continued)

17 Commitments

Capital commitments

The total amount contracted for but not provided in the financial statements relating to the Warren redevelopment was £423,327 (2024 - £Nil).

18 Funds

	Balance at 1 April 2024 £	Incoming resources £	Resources expended £	Capital Financing/ Transfers £	Balance at 31 March 2025 £
Unrestricted funds					
<i>General</i>					
General funds	158,736	573,870	(543,120)	(13,939)	175,547
<i>Designated</i>					
Building Fund	14,953	5,829	(10,469)	-	10,313
County Development Fund	626,903	864,138	(324,462)	-	1,166,579
Norman Garon Fund	32,552	20,000	-	-	52,552
Special needs	8,511	150	(200)	-	8,461
Memorial funds	176,144	-	(2,565)	-	173,579
Essex International Jamboree	(20,803)	1,170,037	(1,131,655)	13,939	31,518
Skreens Park	85,598	450,030	(454,971)	10,500	91,157
Thriftwood	63,271	42,934	(20,107)	-	86,098
Inclusivity Fund	4,868	-	-	-	4,868
	<u>991,997</u>	<u>2,553,118</u>	<u>(1,944,429)</u>	<u>24,439</u>	<u>1,625,125</u>
Total unrestricted funds	1,150,733	3,126,988	(2,487,549)	10,500	1,800,672
Restricted funds					
County Support Fund	48,162	10,500	(2,220)	(10,500)	45,942
Other funds					
Capital financing reserve	<u>1,574,363</u>	<u>-</u>	<u>-</u>	<u>324,462</u>	<u>1,898,825</u>
Total funds	<u><u>2,773,258</u></u>	<u><u>3,137,488</u></u>	<u><u>(2,489,769)</u></u>	<u><u>324,462</u></u>	<u><u>3,745,439</u></u>

Essex County Scout Council

Notes to the Financial Statements for the Year Ended 31 March 2025 (continued)

	Balance at 1 April 2023 £	Incoming resources £	Resources expended £	Transfers £	Balance at 31 March 2024 £
Unrestricted funds					
<i>General</i>					
General funds	182,990	924,935	(949,479)	290	158,736
<i>Designated</i>					
Building Fund	31,554	5,741	(22,342)	-	14,953
County Development Fund	456,348	222,899	(52,344)	-	626,903
Norman Garon Fund	43,081	20,000	(30,529)	-	32,552
Special needs	8,361	150	-	-	8,511
Memorial funds	178,790	-	(2,646)	-	176,144
Activity teams	9,608	494	(9,812)	(290)	-
Essex International Jamboree	(5,446)	1,610	(16,967)	-	(20,803)
Skreens Park	17,645	466,504	(398,551)	-	85,598
Thriftwood	32,371	58,475	(27,575)	-	63,271
Inclusivity Fund	735	4,133	-	-	4,868
	<u>773,047</u>	<u>780,006</u>	<u>(560,766)</u>	<u>(290)</u>	<u>991,997</u>
Total unrestricted funds	956,037	1,704,941	(1,510,245)	-	1,150,733
Restricted					
County Support Fund	49,800	-	(1,638)	-	48,162
Other funds					
Capital financing reserve	<u>1,574,363</u>	<u>-</u>	<u>-</u>	<u>-</u>	<u>1,574,363</u>
Total funds	<u>2,580,200</u>	<u>1,704,941</u>	<u>(1,511,883)</u>	<u>-</u>	<u>2,773,258</u>

Essex County Scout Council

Notes to the Financial Statements for the Year Ended 31 March 2025 (continued)

Designated Funds

(1) Building Fund- is financed by a 40p per head levy on the membership fee. The Grants Board considers applications from Scout Groups and Districts for financial assistance towards building projects.

(2) Capital Development Fund- used, principally, to finance new developments at Skreens Park Activity Centre. During 2024/2025, the Trustees progressed plans for redevelopment of The Warren building at Skreens Park, with planning permission having previously been obtained from Chelmsford City Council and an Architect and Structural Engineer instructed to develop detailed plans. Following completion of a Tender process, a Contractor was appointed, with construction commencing in November 2024. In addition, revised plans were produced for development of a new Maintenance and Storage Barn at Skreens Park, to enable the sites machinery and equipment to be stored in one place, as well as providing a rest facility for our volunteer team. Planning approval was received June 2024, following which detailed plans have been drawn up, ahead of a Tender process being undertaken, with the Contractor undertaking the Warren Redevelopment appointed. Costs relating to the Warren project have been funded from a generous legacy received from the estate of the late Malcolm Treacher MBE, with the new Maintenance and Storage Barn being funded from the Capital Development Fund.

(3) Norman Garon Grants Fund- The County Grants Board administers funds made available annually by the Norman Garon Trust. The County Grants Board considers applications from Scout Groups and Districts for financial assistance towards new buildings, repairs, equipment and a new group or section start ups.

(4) Special Needs Fund- financed by bequests and donations. The County Grants Board consider applications for any purpose that will enhance the scouting experience for those with special needs.

(5) The Memorial Fund- financed by bequests received, with the monies used to support Scouting activities within the County, as approved by the Trustee Board.

(6) The Essex International Jamboree Fund- - this is used to finance the Jamboree held jointly with the three Guide Counties of Essex, every four years. The fund represents the Essex County Scout Council share of the balance carried forward following the 2024 Jamboree.

(7) Skreens Park- a sub-Committee of the County Trustee Board manages Skreens Park Activity Centre. A separate Designated Fund is maintained for its financial activities, other than major capital expenditure, which is financed from the Capital Development Fund. Upgrades to the site and activities have continued to be carried out by the permanent staff and volunteers,

(8) Thriftwood- A separate Designated Fund is maintained for the financial activities of the County Headquarters and Training Complex at Thriftwood.

(9) Inclusivity Fund- originally established to provide financial assistance to young people and leaders attending Overseas Jamborees, using funds from within existing provisions and donations. The Trustees have subsequently agreed to expand support to anyone attending a County organised International Expedition.

Restricted Funds:

County Support Fund- The County Trustee Board believes that Finances should not be a barrier for a young person or adult volunteer to take part in Scouting. As a result, the Restricted Fund was established, using available funds, to support Members of Essex Scouting through the provision of financial assistance to those Districts/Groups/Units/Individuals where financial support is required, as a result of the increasing cost of living pressures and enable them to continue their Scouting journey.

Other Funds:

Essex County Scout Council

Notes to the Financial Statements for the Year Ended 31 March 2025 (continued)

Capital Financing Reserve- see note 12 to the financial statements for further explanation of this fund.

The transfer of £10,500 between restricted funds and designated funds was for the 80% element of the expenditure of the CCTV in which Rural Essex had granted the money for in the year.

The transfer from unrestricted to designated funds was to reflect an increase in the Essex International Jamboree fund.

The movement within capital financial of £324,462 completed to increase the Capital Finance Reserve to reflect the increase in fixed assets as per note 12.

19 Analysis of net assets between funds

	Unrestricted funds		Restricted funds	Other funds	Total funds at 31 March 2025
	General	Designated			
	£	£	£	£	£
Tangible fixed assets	-	-	-	1,898,825	1,898,825
Current assets	337,032	1,794,045	45,942	-	2,177,019
Current liabilities	(161,485)	(168,920)	-	-	(330,405)
Total net assets	<u>175,547</u>	<u>1,625,125</u>	<u>45,942</u>	<u>1,898,825</u>	<u>3,745,439</u>

	Unrestricted funds		Restricted funds	Other funds	Total funds at 31 March 2024
	General	Designated			
	£	£	£	£	£
Tangible fixed assets	-	-	-	1,574,363	1,574,363
Current assets	240,719	2,743,911	48,162	-	3,032,792
Current liabilities	(81,983)	(1,751,914)	-	-	(1,833,897)
Total net assets	<u>158,736</u>	<u>991,997</u>	<u>48,162</u>	<u>1,574,363</u>	<u>2,773,258</u>

20 Related party transactions

The Trustees have donated £1,070 (2023/24 £1,238) to the Charity without conditions.

Two of the Trustees are also Trustees of the Norman Garon Trust (registered charity 1120656) which donated £150,000 to Essex County Scout Council during the year (2023/24 £300,000)

Wendy Bye is the County Bookkeeper which is a paid, self employed part-time role. During the year her company was paid £11,282 (2023/24 £10,260). Wendy is the wife of Bob Bye, the County Lead Volunteer.

21 Events after the reporting date

Events after the reporting period are detailed in the Trustee Annual report on Pages 13 and 14.

Essex County Scout Council

Statement of Financial Activities by fund for the Year Ended 31 March 2025

	Total Unrestricted Funds 2025 £	Total Unrestricted Funds 2024 £
Income and Endowments from:		
Donations and legacies	951,803	301,451
Charitable activities	2,092,105	1,343,219
Other trading activities	36,938	32,314
Investment income	43,957	27,957
Other income	2,185	-
	<u>3,126,988</u>	<u>1,704,941</u>
Total income		
Expenditure on:		
Charitable activities	(2,487,549)	(1,510,245)
	<u>(2,487,549)</u>	<u>(1,510,245)</u>
Total expenditure		
Net income	639,439	194,696
Gross transfers between funds	10,500	-
	<u>649,939</u>	<u>194,696</u>
Net movement in funds		
Reconciliation of funds		
Total funds brought forward	3,049,558	2,530,400
	<u>3,699,497</u>	<u>2,725,096</u>
Total funds carried forward		

Essex County Scout Council

Statement of Financial Activities by fund for the Year Ended 31 March 2025 (continued)

	Total Restricted Funds 2025 £	Total Restricted Funds 2024 £
Income and Endowments from:		
Donations and legacies	10,500	-
Total income	10,500	-
Expenditure on:		
Charitable activities	(2,220)	(1,638)
Total expenditure	(2,220)	(1,638)
Net income/(expenditure)	8,280	(1,638)
Gross transfers between funds	(10,500)	-
Net movement in funds	(2,220)	(1,638)
Reconciliation of funds		
Total funds brought forward	48,162	49,800
Total funds carried forward	45,942	48,162

Essex County Scout Council

Detailed Statement of Financial Activities for the Year Ended 31 March 2025

	Total 2025 £	Total 2024 £
Income and Endowments from:		
Donations and legacies (analysed below)	962,303	301,451
Charitable activities (analysed below)	2,092,105	1,343,219
Other trading activities (analysed below)	36,938	32,314
Investment income (analysed below)	43,957	27,957
Other income (analysed below)	<u>2,185</u>	<u>-</u>
Total income	<u>3,137,488</u>	<u>1,704,941</u>
Expenditure on:		
Charitable activities (analysed below)	<u>(2,489,769)</u>	<u>(1,511,883)</u>
Total expenditure	<u>(2,489,769)</u>	<u>(1,511,883)</u>
Net income	<u>647,719</u>	<u>193,058</u>
Net movement in funds	647,719	193,058
Reconciliation of funds		
Total funds brought forward	<u>3,097,720</u>	<u>2,580,200</u>
Total funds carried forward	<u><u>3,745,439</u></u>	<u><u>2,773,258</u></u>

Essex County Scout Council

Detailed Statement of Financial Activities for the Year Ended 31 March 2025 (continued)

	Total 2025 £	Total 2024 £
<i>Donations and legacies</i>		
Donations and legacies	962,303	301,451
	<u>962,303</u>	<u>301,451</u>
<i>Charitable activities</i>		
HQ Subscriptions	51,097	43,059
Major Events and International	371,353	832,678
County Activities	507,963	462,760
Jamboree	1,161,272	-
Other Income	420	4,722
	<u>2,092,105</u>	<u>1,343,219</u>
<i>Other trading activities</i>		
Skreens - Shop sales	36,938	32,314
	<u>36,938</u>	<u>32,314</u>
<i>Investment income</i>		
Investment income	35,480	25,584
Skreens - Bank interest	856	800
EIJ bank interest	7,621	1,573
	<u>43,957</u>	<u>27,957</u>
<i>Other income</i>		
Insurance claim	2,185	-
	<u>2,185</u>	<u>-</u>
<i>Charitable activities</i>		
Activities undertaken directly	(2,218,138)	(1,241,021)
Allocated support costs	(12,616)	(25,780)
Staff costs	(215,538)	(196,455)
Auditors' remuneration	(15,056)	(12,692)
Other governance costs	(28,421)	(35,935)
	<u>(2,489,769)</u>	<u>(1,511,883)</u>

This page does not form part of the statutory financial statements.

		2024 Census numbers						2025 Census numbers					
		Young			Numbers			Young			Numbers		
						Subscriptions Received- Young People @£41						Subscriptions Received- Young People @£46.00	
Districts		People	Network	Adults	Total	£		People	Network	Adults	Total	£	
	Basildon	414	8	204	626	15,525		436	16	175	627	20,056	
	Billericay & Wickford	663	7	211	881	24,863		634		189	823	29,164	
	Braintree	754	17	236	1,007	28,275		811	16	246	1,073	37,306	
	Brentwood	717	0	302	1,019	26,888		704		240	944	32,384	
	Castle Point	749	3	239	991	28,088		710	4	242	956	32,660	
	Chelmsford and District	1,982	9	571	2,562	74,325		1,971	3	569	2,543	90,666	
	Colchester Estuary	746	0	255	1,001	27,975		739		265	1,004	33,994	
	Colchester North	1,102	22	314	1,438	41,325		1,089	6	309	1,404	50,094	
	Crouch Valley	850	7	241	1,098	31,875		888	1	251	1,140	40,848	
	Halstead & Colne Valley	0	0	0	0 -				0	0	0	0	
	Harlow	432	0	121	553	16,200		460	2	137	599	21,160	
	Hatfield Forest	490	0	154	644	18,375		501		154	655	23,046	
	Maldon & East Essex	884	0	248	1,132	33,150		888		279	1,167	40,848	
	Royal Forest	832	0	282	1,114	31,200		817		258	1,075	37,582	
	Saffron Walden	788	12	215	1,015	29,550		737	9	205	951	33,902	
	Southend Estuary	664	10	196	870	24,900		662	16	200	878	30,452	
	Southend West	878	13	387	1,278	32,925		853	13	339	1,205	39,238	
	Tendring	628	5	231	864	23,550		601	9	216	826	27,646	
	Thurrock/Stanford Le Hope	1,120	6	383	1,509	42,000		1,133	6	366	1,505	52,118	
	Districts Total	14,693	119	4,790	19,602	550,988		14,634	101	4,640	19,375	673,164	
County	Activity Teams, Network etc	3	3	138	144	0						0	
	Adventures Offshore	0	0	44	44	0				41		0	
	Essex County	0	0	0	0	0				128		0	
	County Total	3	3	182	188	0		0	0	169	0	0	
	Grand Total	14,699	122	5,154	19,978	550,988		14,634	101	4,809	19,375	673,164	

This page does not form part of the statutory financial statements.

Grants Analysis

<u>Cases Paid</u>		£		
1st Wickford	Structural work	£3,000		
7th Grays	New electrics	£3,000		
Harlow District	Hammocks	£100		
1st Braintree	New fencing	£4,980		
1st Chesterford	New build	£10,000		
4th/6th Leigh-on-Sea	Kayaks	£1,000		
Riffhams campsite	Toilet upgrade	£1,500		
Saffron Walden District	Water activities equipment	£1,000		
Tendring District	New roof	£3,000		
1st Shenfield	Hike tents	£400		
1st Broomfield	Car park	£500		
2nd Chelmsford	Safety improvements	£2,000		
1st Stanford-le-Hope	Games equipment	£239		
Mountain Team	Helmets	£431		
1st Stanford-le-Hope	New electrics	£1,280		
17th Colchester	Minibus training	£250		
		£32,680		
<u>Start-up grants paid</u>				
1st Black Notley Squirrel Drey		£200		
1st Boreham Squirrel Scout Drey		£200		
Basildon Nova ESU		£200		
1st Chesterford Scout Troop		£200		
Braintree Seax Explorer Scout Unit		£200		
		£1,000		
<u>Support Fund grants paid</u>				
1st Yeldham		£1,250		
5th Clacton		£245		
4th Canvey Island		£200		
1st Grays		£250		
		£1,945		
<u>Additional Needs grants paid</u>				
5th Clacton		£200		
<u>Cases agreed awaiting payment</u>				
Southend Estuary ES	Minibus	£2,000		
County Stores Team	New trailer	£3,000		
The Walthams	Purchase of Freehold (part paid)	£2,589		
1st Woodham Ferrers	New kitchen	£1,000		
1st Braintree	New fencing (part paid)	£20		
1st Clacton	Rebuild extension	£5,000		
Other		£170		
	Totals	£13,779		
		£49,604		

This page does not form part of the statutory financial statements.



Front Cover – Essex International Jamboree 2024 site - Daytime
Back Cover – Essex International Jamboree 2024 site - Nighttime

Photography by Essex Scouts Media Team